

OUTLINE DRAFT....For internal use only....March 15, 1974

VERSATILE SLURRY SEAL, a new  
bituminous maintenance tool

An informal slide presentation for discussion with participants in the ANNUAL PAVEMENT CONFERENCE held at Slurry Seal, Inc., Waco, Texas, March 19 & 20, 1974 presented by C. Robert Benedict, Benedict Slurry Seal Inc., Dayton, Ohio.

By contrasting a single component central mix material and a two-component Moto-Mix-Paver or chip seal system with the 4 or 5 component SLURRY SEAL system, we discover that modern Slurry Seals are not only the most sophisticated of all the paving arts, but also the most versatile.

To illustrate this versatility of slurry seals consider a typical interstate shoulder seal where slurry can in one pass:

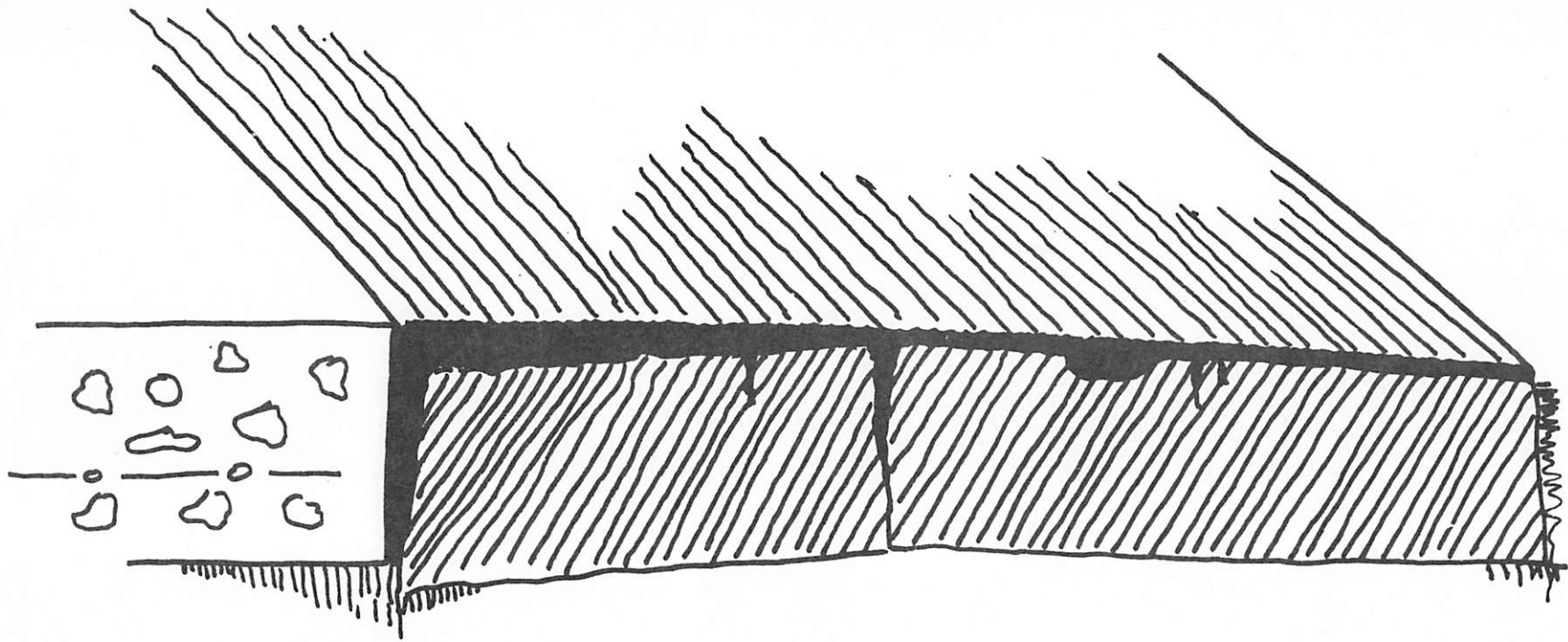
- 1) Fill the interface crack
- 2) Provide a modest wedge
- 3) Fill stress cracks and minor surface voids
- 4) Provide a weather-tight seal
- 5) Give excellent Skid Resistance
- 6) Provide color delineation
- 7) Deposit mix according to the demands of the surface.

Because of Slurry Seal's ability to deposit thin layers of product, the use of special, even exotic, materials becomes economically attractive.

Dedication and experience of the working personnel and inspection by the owner and supervision is essential. Thorough laboratory design and field controls as well as careful job planing and surface preparation must be done to insure a quality job.

Slide Series Outline:

- 1) Hubers Hts. Quick-set, Aggregate, Versatile Slurry, SR 32
- 2) Wet Pavement Problems, Dallas, Texas solution
- 3) Color delineation, colored berms and stripe background
- 4) Large area work, parking lots and airports.
- 5) Bridge decks with latex slurry
- 6) Cracks and soft slurry
- 7) Wet shade erosion corrected
- 8) Wheat drills corrected
- 9) Bleeding pavement correction
- 10) Loose stone from chip seal...cape seal
- 11) Slurry Seal over loose dirty chip seal WSU
- 12) Kentucky I-75 shoulder seal
- 13) Moto-Mix-Paver seal
- 14) Very Fine Slurry Filler Tack Coat for hot mix
- 15) Some application Techniques



## VERSATILE SLURRY SEAL CAN IN ONE PASS:

- ① FILL INTERFACE CRACK
- ② PROVIDE A MODEST WEDGE
- ③ FILL STRESS CRACK & OTHER MINOR SURFACE VOIDS
- ④ PROVIDE A WEATHER TIGHT SEAL
- ⑤ GIVE EXCELLENT SKID RESISTANCE
- ⑥ PROVIDE COLOR DELINEATION
- ⑦ DEPOSIT MATERIAL ACCORDING TO THE DEMANDS OF THE SURFACE